

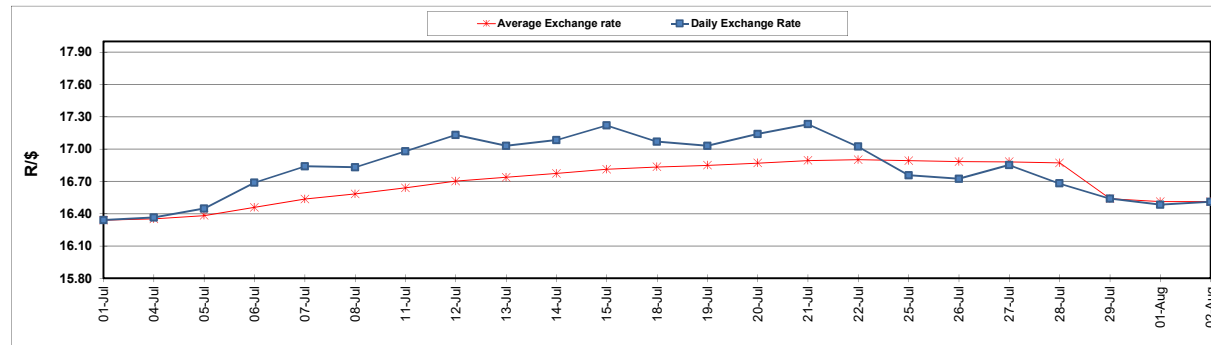
	PETROL 95 ULP	PETROL 93 ULP & LRP	DIESEL 0.05%	DIESEL 0.005%	ILL. PAR.
GAUTENG PUMP PRICE (SA c/l) AS FROM 03/08/2022	2,542.000	2,499.000	-	-	-
WHOLESALE PRICE (SA c/l) AS FROM 03/08/2022	-	-	2,452.440	2,461.840	1,842.288
SINGLE NATIONAL MAXIMUM RETAIL PRICE	-	-	-	-	2,431.000
BASIC FUEL PRICE - 02/08/2022 (SA c/l)	1,314.050	1,283.589	1,414.177	1,427.608	1,464.819
PRESS RELEASE CONTRIBUTION TO BFP 29/07/2022 - 02/08/2022 (SA c/l)	1,689.410	1,646.410	1,763.630	1,776.030	1,768.128
UNIT OVER/(UNDER) RECOVERY - 02/08/2022 (SA c/l)	375.360	362.821	349.453	348.422	303.309
AVERAGE BASIC FUEL PRICE 29/07/2022 - 02/08/2022	1,339.849	1,308.807	1,456.848	1,466.112	1,514.765
AVERAGE UNIT OVER/(UNDER) RECOVERY 29/07/2022 - 02/08/2022	349.561	337.603	306.782	309.918	253.363

ANALYSIS MOVEMENT OF AVERAGE OVER/(UNDER) RECOVERY

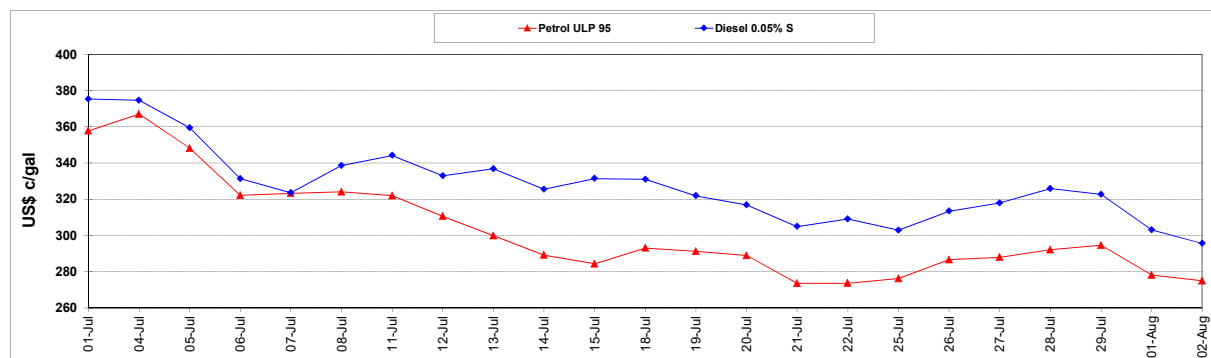
	PETROL 95	PETROL 93	DIESEL 0.05%	DIESEL 0.005%	ILL. PAR.
- MOVEMENT IN INTERNATIONAL PRODUCT PRICES	320.291	309.011	274.956	277.890	220.272
- MOVEMENT IN EXCHANGE RATE	29.270	28.592	31.826	32.028	33.091
AVERAGE UNIT OVER/(UNDER) RECOVERY 29/07/2022 - 02/08/2022	349.561	337.603	306.782	309.918	253.363

R/\$ EXCHANGE RATE - (R/\$16.5100 - 02/08/2022)

EXCHANGE RATE USED IN BASIC FUEL PRICE



INTERNATIONAL PRODUCT PRICES OF BASKET USED IN BASIC FUEL PRICE



BASIC FUEL PRICE IN SA CENTS PER LITRE

